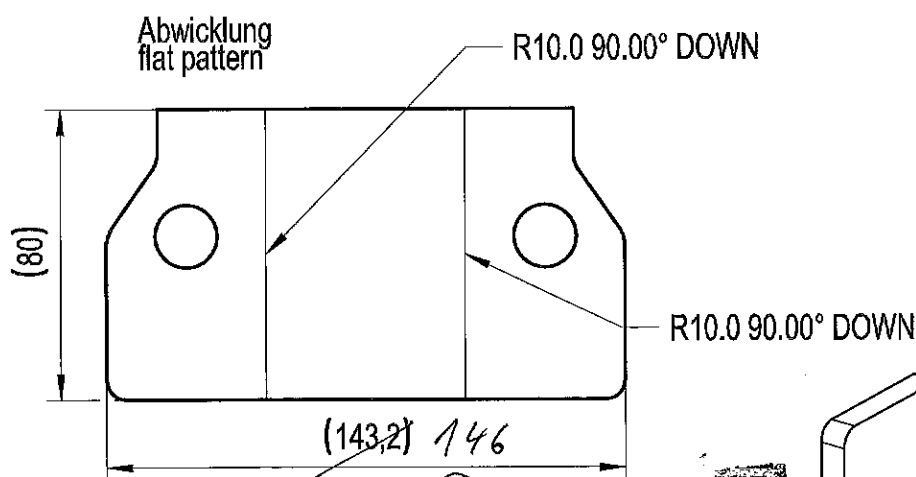
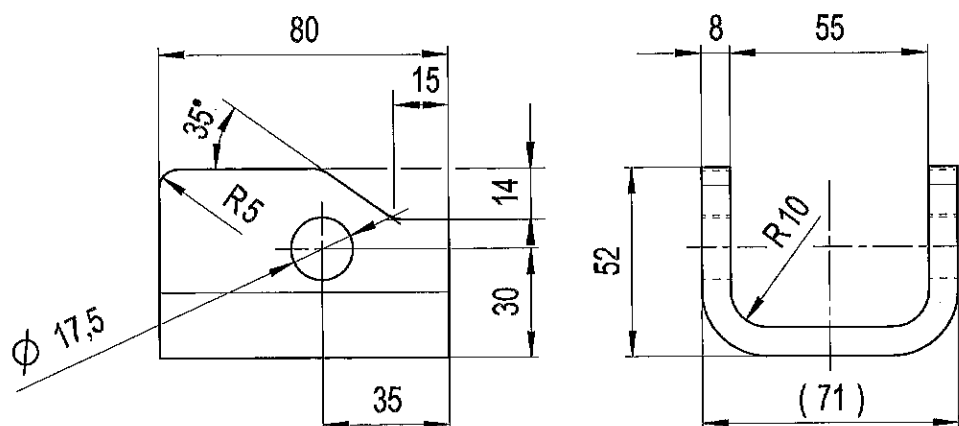


# PŘEKLAD

dne: 24-09-2018

a/PROVEDLA  
 JANA PROKEŠOVÁ



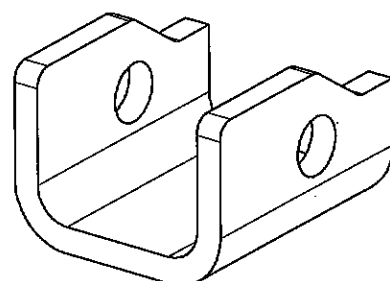
Achtung  
 Fertigmaße sind verbindlich  
 Maße der Abwicklung nicht bindend  
 Abwicklung dem Kantverfahren anpassen

Important  
 Finish dimensions are binding  
 The drawing must be adapted  
 according to the edge method

24-09-2018

ARCHIV

5



© 2M/18/00980 - změna kof. rozvinnu  
 20.9.2018

Ohne Beschriftung  
 KWN 2186915

B100/ = ✓

REFER TO PROTECTION NOTICE ISO 16016		MATERIAL S235JR			TYPE DOCUMENT-NO. VERS. STATUS		
		ECN-NO. 61644	MAT-SPEC. WGN2114788_A001		UGD 4498021	03	SF
HSTG'		DRAWING BY	APPROVED BY	LAST MODIFIED BY	WEIGHT	SCALE	FORMAT
ISO 8015	ISO 14405	DATE 08.10.2012	29.08.2018	29.08.2018	0,664 KG	1:2	A4
ISO 2768	m/K	NAME RUDOLPHL	BARGB	BARGB	FIRST USE K006		SHEET OF 1 / 1
ISO 13920	BF	DESCRIPTION Aufnahme Zugfeder STR110 Support extension spring STR110					
ISO 8062	CT10						
ISO 9013	111						
ISO 1101	EN ISO 1302						
✓ beliebig = at liberty	✓ = √R <sub>z</sub> = 25					PART NO.	REV.NO.
✓ = √R <sub>z</sub> = 100	✓ = √R <sub>z</sub> = 0,3					2293224	03
KWN 2188113							